

Harper

4 BEDROOM
2.5 BATHROOM

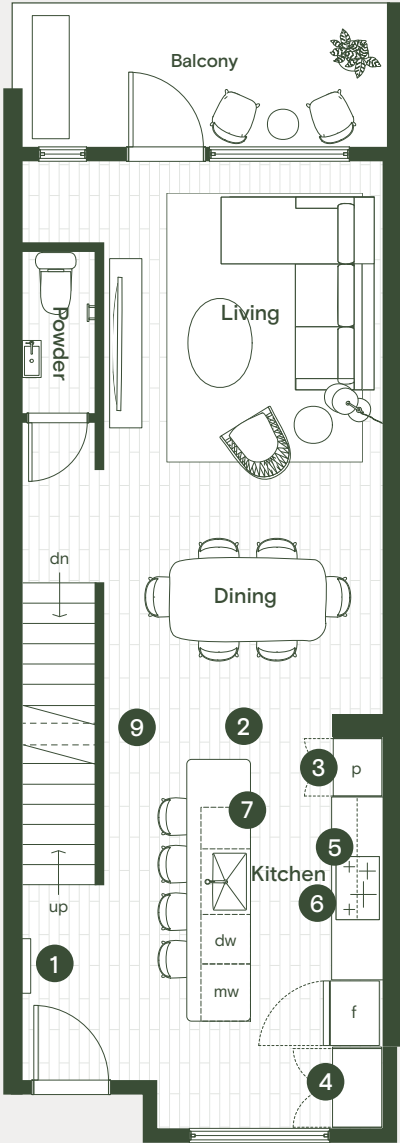
Interior	1,589 sf
Exterior	335 sf
Garage	254 sf

In Good Form

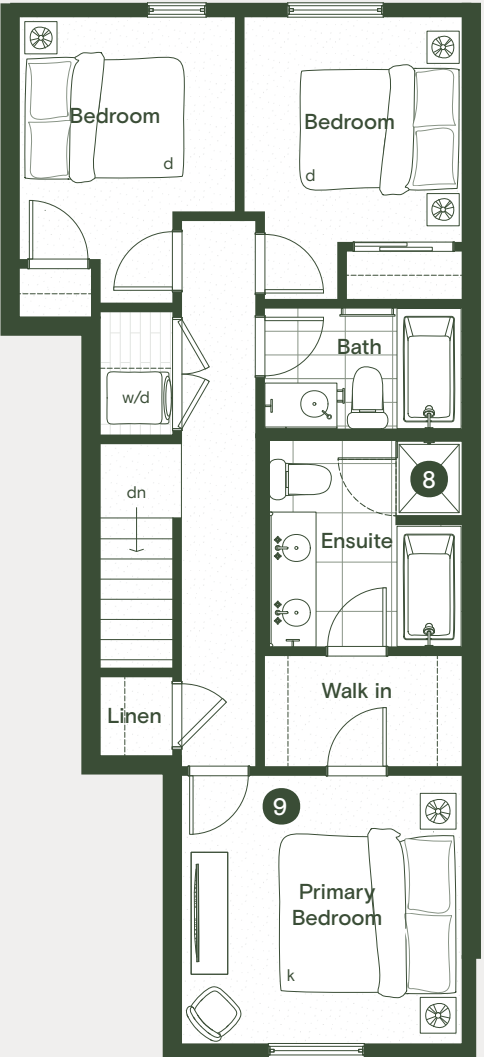
- 1. Built-in entry niche with feature lighting
- 2. Expansive kitchen with 171 ft³ of storage
- 3. Full height pantry
- 4. Integrated coat and storage closet
- 5. Custom integrated hood fan
- 6. Bosch induction cooktop and wall oven
- 7. Slide-out organics and recycling storage
- 8. Tiled wall niche in shower
- 9. Air conditioning for main floor and primary bedroom
- 10. Optional bathroom personalizes the home
- 11. Garage pre-wired for EV charging capability
- 12. Expansive front patio at roughly 230 sf



LOWER



MAIN



UPPER