

Harper

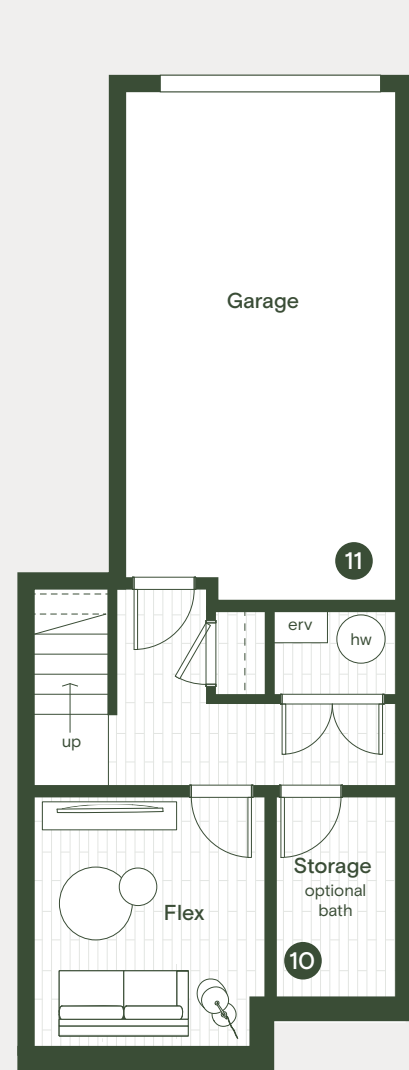
Townhome Fight

3 BEDROOM & FLEX
2.5 BATHROOM

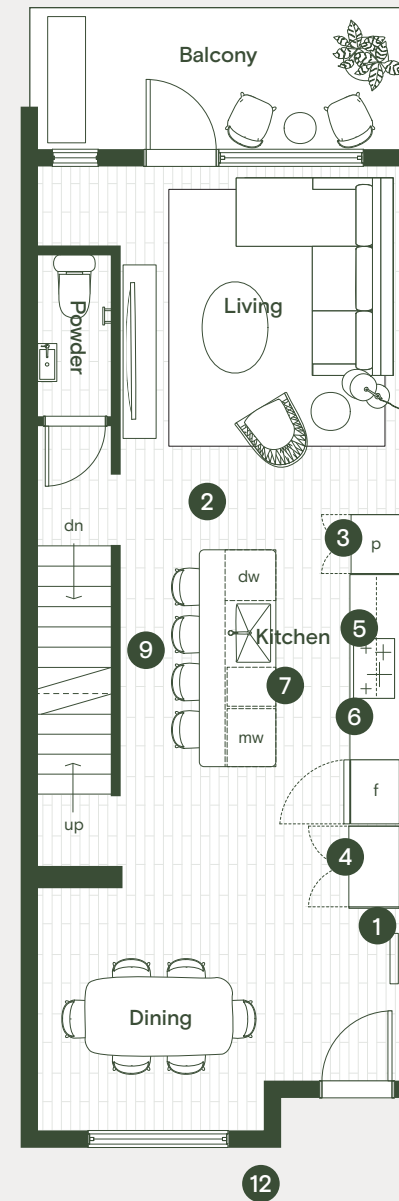
Interior	1,605 sf
Exterior	231 sf
Garage	253 sf

In Good Form

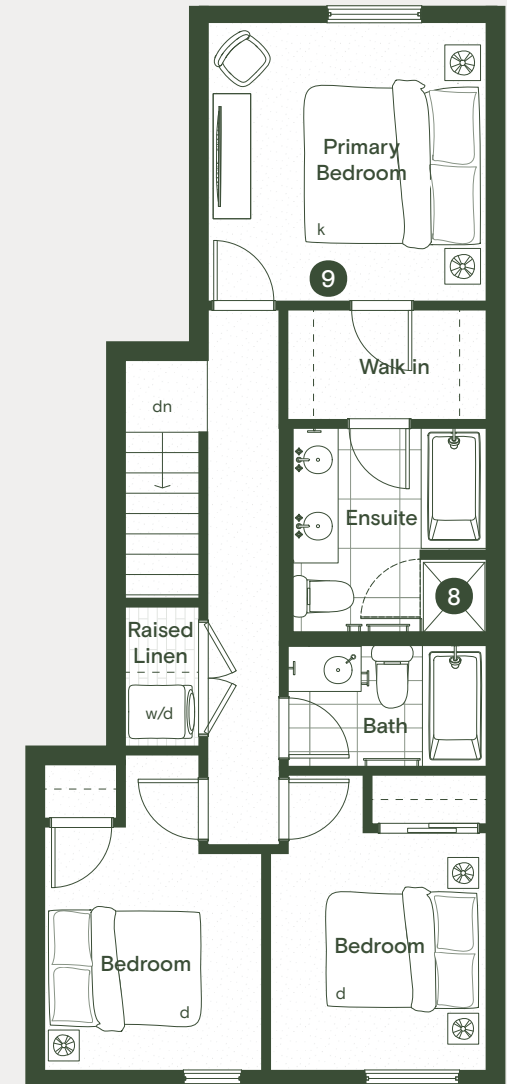
1. Built-in entry niche with feature lighting
2. Expansive kitchen with 171 ft³ of storage
3. Full height pantry
4. Integrated coat and storage closet
5. Custom integrated hood fan
6. Bosch induction cooktop and wall oven
7. Slide-out organics and recycling storage
8. Tiled wall niche in shower
9. Air conditioning for main floor and primary bedroom
10. Optional bathroom personalizes the home
11. Garage pre-wired for EV charging capability
12. Expansive front patio at roughly 130 sf



LOWER



MAIN



UPPER